

# S39P601

## 隐藏式三节反弹缓冲带把手同步滑轨(16板)

SYNCHRONIZED FULL EXTENSION PUSH OPEN & SOFT CLOSING UNDERMOUNT SLIDES WITH LOCK FOR 16MM PANEL

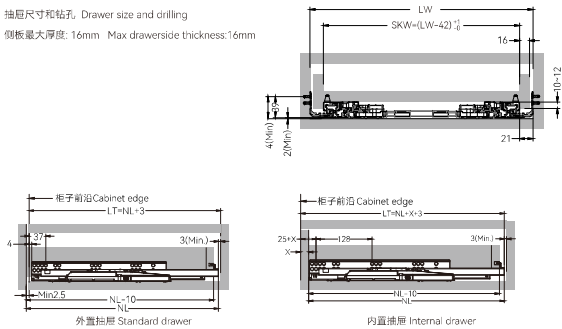
载重: 35公斤  
 长度: 300-550mm  
 抽屉高度调节量: 0~+3mm  
 抽屉左右调节量±1.5mm  
 抽屉面板缝隙调节量-2.5~+4mm

Load capacity: 35kg  
 Lengths: 300-550mm  
 Drawer height adjustment: 0~+3mm  
 Drawer width adjustment: ±1.5mm  
 Front panel gap adjustment: -2.5~+4mm



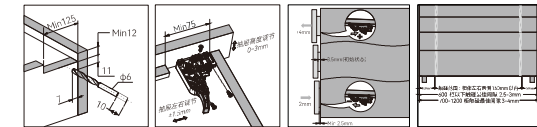
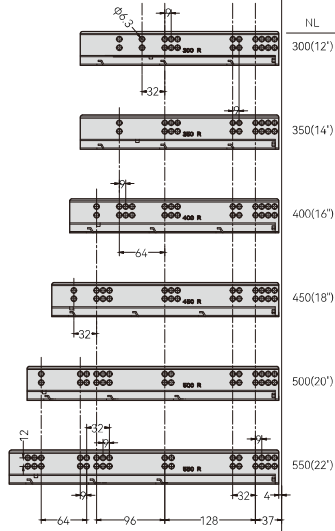
### 滑轨安装尺寸 Installation specifications

SKW=抽屉内宽度 Internal drawer width  
 LW=柜内宽度 Internal cabinet width  
 NL=滑轨标称长度 Nominal length  
 LT=柜内深度 Internal cabinet depth  
 抽屉尺寸和钻孔. Drawer size and drilling  
 侧板最大厚度: 16mm Max drawerside thickness:16mm



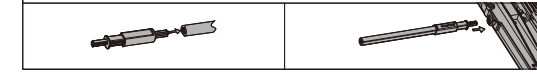
滑轨安装孔的位置(mm)  
Hole position

柜子前沿 Cabinet edge



同步杆安装步骤 Installation steps for synchronizing bar:

同步杆16板裁切尺寸 16mm version synchronizing bar cutting size=(LW-372)±1mm



抽屉尺寸和钻孔(mm) Drawer size and drilling

# S39P801

## 隐藏式三节反弹缓冲带把手同步滑轨(18板)

SYNCHRONIZED FULL EXTENSION PUSH OPEN & SOFT CLOSING UNDERMOUNT SLIDES WITH LOCK FOR 18MM PANEL

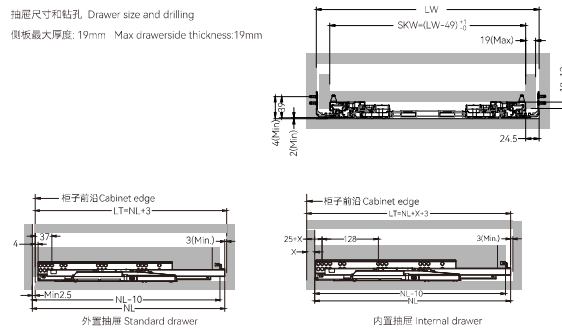
载重: 35公斤  
 长度: 300-550mm  
 抽屉高度调节量: 0~+3mm  
 抽屉左右调节量±1.5mm  
 抽屉面板缝隙调节量-2.5~+4mm

Load capacity: 35kg  
 Lengths: 300-550mm  
 Drawer height adjustment: 0~+3mm  
 Drawer width adjustment: ±1.5mm  
 Front panel gap adjustment: -2.5~+4mm



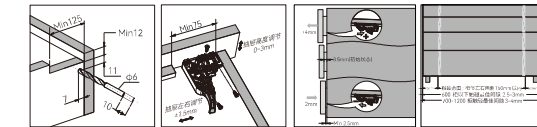
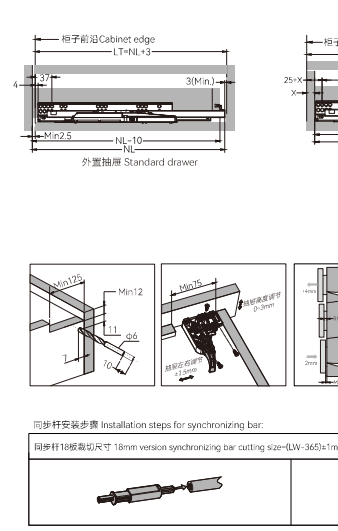
### 滑轨安装尺寸 Installation specifications

SKW=抽屉内宽度 Internal drawer width  
 LW=柜内宽度 Internal cabinet width  
 NL=滑轨标称长度 Nominal length  
 LT=柜内深度 Internal cabinet depth  
 抽屉尺寸和钻孔. Drawer size and drilling  
 侧板最大厚度: 19mm Max drawerside thickness:19mm



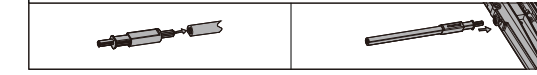
滑轨安装孔的位置(mm)  
Hole position

柜子前沿 Cabinet edge



同步杆安装步骤 Installation steps for synchronizing bar:

同步杆18板裁切尺寸 18mm version synchronizing bar cutting size=(LW-365)±1mm



抽屉尺寸和钻孔(mm) Drawer size and drilling